



**INTEGRA96 ULUSLARARASI URUN VE SISTEM BELGELENDIRME,
BAGIMSIZ GOZETIM, DENETIM, EGITIM HIZMETLERI LTD. STİ.**

8090/1 Sk. No:5/A Maltepe Mah. Çiğli / İzmir – TÜRKİYE
Tel: +90 232 462 20 51-52 Faks: +90 232 462 20 61
info@integra96.com www.integra96.com

TEST REPORT

**COMMISSION REGULATION (EU) No 813/2013
of 2 August 2013**

**implementing Directive 2009/125/EC of the European Parliament
and of the Council with regard to ecodesign requirements for
space heaters and combination heaters**

Manufacturer	UTET ARGE ENERJİ HİDROJEN MAKİNE VE KİMYA DANIŞMANLIK SANAYİ VE TİCARET LİMİTED ŞİRKETİ		
Adress	Ferhatpaşa Mah 4.Sok No:28-A/3 Ataşehir/İstanbul/Türkiye		
Product	Hydrogen Plasma Combi Boiler		
Tested Model.....	E300		
Testing laboratory	Integra96 İzmir Testing laboratory		
Adress	8090/1 Sk. No:5/A Maltepe Mah. Çiğli / İzmir – TÜRKİYE		
Report Number	INT-ERP-813/02(Rev.01)		
Test date	05.01.2026		
Date of issue	12.02.2026		
Testing procedures	(EU) 813/2013, (EU) 811/2013		
Number of pages(Report)	14		
Number of pages (Attachments)	3		
Compiled by .. :	Eng. C. HURŞİTOĞLU	Approved by . :	Eng. A. TULEK
(+ signature)		(+ signature)	
test case does not apply to the test object.....	N		
test object does meet the requirement.....	P(ass)		
test object does not meet the requirement.....	F(ail)		
General Remarks			



The results of this report are valid only for the tested samples submitted by the manufacturer.

"(see remark #)" refers to a remark appended to the report.

"(see appended table)" refers to a table appended to the report.

Through out this report a comma is used as the decimal separator.



**INTEGRA96 ULUSLARARASI URUN VE SISTEM BELGELENDIRME,
BAGIMSIZ GOZETIM, DENETIM, EGITIM HIZMETLERI LTD. STİ.**

8090/1 Sk. No:5/A Maltepe Mah. Çiğli / İzmir – TÜRKİYE
Tel: +90 232 462 20 51-52 Faks: +90 232 462 20 61
info@integra96.com www.integra96.com

Product: Hydrogen Plasma Combi Boiler

Function: Hydrogen-Plasma Combination

Trademark: LOTUS

Manufacturer: UTET ARGE ENERJİ HİDROJEN MAKİNE VE KİMYA DANIŞMANLIK SANAYİ VE
TİCARET LIMITED ŞİRKETİ

Tested Model: E300

Electrical Features: 3P 400V AC / 50/60 Hz / 6 kW

Design load (kW): 6.0 kW

Electricity Consumption (kWh): 2,65

Heat Energy Produced (kWh): 4,80

Test summary:

Tests performed (test name and test substance):

The presented devices comply with certain standards.
(EU) 813/2013 COMMISSION DELEGATION
REGULATION Substance 3.

Model E300 is presented as a test sample.

The hydrogen plasma combi is connected to one side of a
plate heat exchanger. The other side of the plate heat
exchanger is connected to a cooling tower via a circulation
pump set to a water flow rate of 500 litres per hour.
Measurements were taken based on the cooling load
when the system entered in stabilized operation.

Efficiency was calculated by dividing the total heat energy
obtained during the test by the electrical energy
consumed. The calculation was performed using the
formula: C.O.P. = Heat energy obtained / Electrical energy
consumed.

Testing location:

Integra96 İzmir Testing laboratory

8090/1 Sk. No:5/A Maltepe Mah.
Çiğli / İzmir – TÜRKİYE

The test results presented in this report relate only to the tested sample.

This report may not be reproduced in its entirety without the written approval of the issuing test laboratory.
Any modification of all versions of this document is prohibited. In the event of a conflict between the electronic
version and the original paper version provided by Integra96, the latter shall prevail.

INTEGRA96 INTERNATIONAL PRODUCT AND SYSTEM CERTIFICATION, INDEPENDENT SUPERVISION, AUDIT,
TRAINING SERVICES CO. LTD. accepts no liability for direct, indirect, consequential or incidental damages that
may arise from the use or inability to use the information or data contained in this document.

The contents of this report may only be passed on to third parties in their entirety and with the copyright
notice, prohibition of modification, notice of validity of electronic versions and disclaimer.

The manufacturer/customer may declare sub-models with similar designs to the tested product. Sub-models
must have the same components, circuit designs and mechanical structure as the tested model in order to be
categorized as sub-models. Sub-models may have lower power consumption and/or number of functions.
However, safety functions cannot be reduced. It is the sole responsibility of the manufacturer/customer to
check whether the sub-models are compatible with the tested model.



INTEGRA96 ULUSLARARASI URUN VE SISTEM BELGELENDIRME, BAGIMSIZ GOZETIM, DENETIM, EGITIM HIZMETLERI LTD. STİ.

8090/1 Sk. No:5/A Maltepe Mah. Çiğli / İzmir - TÜRKİYE
Tel: +90 232 462 20 51-52 Faks: +90 232 462 20 61
info@integra96.com www.integra96.com

Revision List (Rev.XX) (Revisions to the report are attached.)

00: -

01: The information sheet has been updated and typos corrected.

Component List

Numara Number	Bileşen adı Component name	Manufacturer/ trademark	Type / model	Teknik Özellikler Technical data
1	Plakalı eşanjör Plate heat exchanger	Termoline	SD005 Type	Lehimli Tip paslanmaz
2	Pompa Water pump	Duca	15-80	Erp Pompa
3	Genleşme Tankı Expansion Tank	Can Conta	Çift kulak Ariston	7 lt – 4 bar -100 C
4	3 Yollu vana motoru 3-way valve motor	Duca2	220-240 V	7.5 mm - 100N

Rating labels and marking





**INTEGRA96 ULUSLARARASI URUN VE SISTEM BELGELENDIRME,
BAGIMSIZ GOZETIM, DENETIM, EGITIM HIZMETLERI LTD. STİ.**

8090/1 Sk. No:5/A Maltepe Mah. Çiğli / İzmir - TÜRKİYE
Tel: +90 232 462 20 51-52 Faks: +90 232 462 20 61
info@integra96.com www.integra96.com

Test sample particulars	
Classification of installation and use	Fixed appliance
Type of the appliance	Combined heating
Function of the appliance	Electrical hydrogen-plasma combi boiler
Heating season (heating function applicable).....	Average
Possible test case verdicts	
test case does not apply to the test object	N/A
test object does meet the requirement	P(Pass)
test object does not meet the requirement	F(Fail)
Testing	
Date of receipt of test item.....	11.28.2025
Date (s) of performance of tests.....	01.05.2026-02.06.2026



**INTEGRA96 ULUSLARARASI URUN VE SISTEM BELGELENDIRME,
BAGIMSIZ GOZETIM, DENETIM, EGITIM HIZMETLERI LTD. STİ.**

8090/1 Sk. No:5/A Maltepe Mah. Çiğli / İzmir - TÜRKİYE
Tel: +90 232 462 20 51-52 Faks: +90 232 462 20 61
info@integra96.com www.integra96.com

COMMISSION REGULATION (EU) No 813/2013
COMMISSION DELEGATED REGULATION (EU) No 811/2013

Clause	Requirement - Test	Result - Remark	Verdict
--------	--------------------	-----------------	---------

COMMISSION REGULATION (EU) No 813/2013

Article 1	Subject matter and scope		P
1	This Regulation establishes ecodesign requirements for the placing on the market and/or putting into service of space heaters and combination heaters with a rated heat output heater ≤ 400 kW including those integrated in packages of space heater, temperature control and solar device or packages of combination heater, temperature control and solar device as defined in article 2 of Commission Delegated Regulation (EU) No 811/2013.		P
2	This Regulation shall not apply to: (a) heaters specifically designed for using gaseous or liquid fuels predominantly produced from biomass; (b) heaters using solid fuels; (c) heaters within the scope of Directive 2010/75/EU of the European Parliament and of the Council; (d) heaters generating heat only for the purpose of providing hot drinking or sanitary water; (e) heaters for heating and distributing gaseous heat transfer media such as vapour or air; (f) cogeneration space heaters with a maximum electrical capacity of 50 kW or above. (g) heat generators designed for heaters and heater housings to be equipped with such heat generators placed on the market before 1 January 2018 to replace identical heat generators and identical heater housings. The replacement product or its packaging shall clearly indicate the heater for which it is intended.		N/A
Article 3	Ecodesign requirements and timetable		P
1	The ecodesign requirements for heaters are set out in Annex II.		P
2	Each ecodesign requirement shall apply in accordance with the following timetable:		P
	(a) from 26 September 2015: (i) heaters shall meet the requirements set out in Annex II, points 1(a), 3 and 5; (ii) combination heaters shall meet the requirements set out in Annex II, point 2(a);		N/A



**INTEGRA96 ULUSLARARASI URUN VE SISTEM BELGELENDIRME,
BAGIMSIZ GOZETIM, DENETIM, EGITIM HIZMETLERI LTD. STİ.**

8090/1 Sk. No:5/A Maltepe Mah. Çiğli / İzmir - TÜRKİYE
Tel: +90 232 462 20 51-52 Faks: +90 232 462 20 61
info@integra96.com www.integra96.com

COMMISSION REGULATION (EU) No 813/2013
COMMISSION DELEGATED REGULATION (EU) No 811/2013

Clause	Requirement - Test	Result - Remark	Verdict									
	(a) from 26 September 2017: (i) electric space heaters, electric combination heaters, cogeneration space heaters, Hydrogen Plasma Combi Boilers and heat pump combination heaters shall meet the requirements set out in Annex II, point 1(b); (ii) combination heaters shall meet the requirements set out in Annex II, point 2(b);		P									
	(a) from 26 September 2018 heaters shall meet the requirements set out in Annex II, point 4(a).		N/A									
3	Compliance with ecodesign requirements shall be measured and calculated in accordance with the requirements set out in Annex III.		P									
Annex II	Ecodesign requirements		P									
1	Requirements for seasonal space heating energy efficiency		P									
	(a) From 26 September 2015 the seasonal space heating energy efficiency and useful efficiencies of heaters shall not fall below the following values:		N/A									
	- Hydrogen Plasma Combi Boilers and heat pump combination heaters, with the exception of low- temperature heat pumps: 100%		N/A									
	- Low-temperature heat pumps: 115%		N/A									
	(b) From 26 September 2017 the seasonal space heating energy efficiency and useful efficiencies of heaters shall not fall below the following values:		P									
	- Hydrogen Plasma Combi Boilers and heat pump combination heaters, with the exception of low- temperature heat pumps: 110%		P									
	- Low-temperature heat pumps: 125%		P									
2	Requirements for water heating energy efficiency		N/A									
	(a) From 26 September 2015 the water heating energy efficiency of combination heaters shall not fall below the following values:		N/A									
	Declared load profile	3XS	XXS	XS	S	M	L	XL	XXL	3XL	4XL	



**INTEGRA96 ULUSLARARASI URUN VE SISTEM BELGELENDIRME,
BAGIMSIZ GOZETIM, DENETIM, EGITIM HIZMETLERI LTD. STİ.**

8090/1 Sk. No:5/A Maltepe Mah. Çiğli / İzmir - TÜRKİYE
Tel: +90 232 462 20 51-52 Faks: +90 232 462 20 61
info@integra96.com www.integra96.com

Water heating energy efficiency	22%	23%	26%	26%	30%	30%	30%	32%	32%	32%	
(a) From 26 September 2017 the water heating energy efficiency of combination heaters shall not fall below the following values:											N/A

COMMISSION REGULATION (EU) No 813/2013
COMMISSION DELEGATED REGULATION (EU) No 811/2013

Clause	Requirement - Test	Result - Remark	Verdict
--------	--------------------	-----------------	---------

	Declared load profile	3XS	XXS	XS	S	M	L	XL	XXL	3XL	4XL		
	Water heating energy efficiency	32%	32%	32%	32%	36%	37%	38%	60%	64%	64%		
3	Requirements for sound power level											N/A	
	From 26 September 2015 the sound power level of Hydrogen Plasma Combi Boilerss and heat pump combination heaters shall not exceed the following values:											N/A	
	Rated heat output ≤ 6 kW		6 kW < Rated heat output ≤ 12 kW		12 kW < Rated heat output ≤ 30 kW		30 kW < Rated heat output ≤ 70 kW						-
	indoor	outdoor	indoor	outdoor	indoor	outdoor	indoor	outdoor	indoor	outdoor			
	60 dB	65 dB	65 dB	70 dB	70 dB	78 dB	80 dB	88 dB					
4	Requirements for emissions nitrogen oxides											N/A	
5	Requirements for product information											N/A	
	From 26 September 2015 the following product information on heaters shall be provided:											N/A	
	(a) the instruction manuals for installers and end-users, and free access websites of manufacturers, their authorised representatives and importers shall contain the following elements:											N/A	
	- For heat pump heaters and heat pump combination heaters, the technical parameters set out in Table 2, measured and calculated in accordance with Annex III;											N/A	
	- Any specific precautions that shall be taken when the heater is assembled, installed or maintained;											N/A	



**INTEGRA96 ULUSLARARASI URUN VE SISTEM BELGELENDİRME,
BAGIMSIZ GOZETİM, DENETİM, EGİTİM HİZMETLERİ LTD. STİ.**

8090/1 Sk. No:5/A Maltepe Mah. Çiğli / İzmir - TÜRKİYE
Tel: +90 232 462 20 51-52 Faks: +90 232 462 20 61
info@integra96.com www.integra96.com

	- Information relevant for disassembly, recycling and/or disposal at end-of-life;		N/A
	Measurements and calculations		P

COMMISSION DELEGATED REGULATION (EU) No 811/2013			
Annex II	Energy efficiency classes		N/A
	Seasonal space heating energy efficiency classes		N/A



**INTEGRA96 ULUSLARARASI URUN VE SISTEM BELGELENDIRME,
BAGIMSIZ GOZETIM, DENETIM, EGITIM HIZMETLERI LTD. STİ.**

8090/1 Sk. No:5/A Maltepe Mah. Çiğli / İzmir - TÜRKİYE
Tel: +90 232 462 20 51-52 Faks: +90 232 462 20 61
info@integra96.com www.integra96.com

COMMISSION REGULATION (EU) No 813/2013
COMMISSION DELEGATED REGULATION (EU) No 811/2013

Clause	Requirement - Test	Result - Remark	Verdict
	The seasonal space heating energy efficiency class of a heater, with the exception of low-temperature heat pumps and Hydrogen Plasma Combi Boilers for low-temperature application, shall be determined on the basis of its seasonal space heating energy efficiency as set out in Table 1.		N/A
	The seasonal space heating energy efficiency class of a low-temperature heat pumps and a Hydrogen Plasma Combi Boilers for low-temperature application shall be determined on the basis of its seasonal space heating energy efficiency as set out in Table 2.		N/A
	The seasonal space heating energy efficiency of a heater shall be calculated in accordance with point 3 and 4 of Annex VII, for Hydrogen Plasma Combi Boilers, heat pump combination heaters and low-temperature heat pumps under average climate conditions.		N/A
2	Water heating energy efficiency classes		N/A
	The water heating energy efficiency class of a combination heater shall be determined on the basis of its water heating energy efficiency as set out in Table 3.		N/A
	The water heating energy efficiency of a combination heater shall be calculated in accordance with point 5 of Annex VII.		N/A



**INTEGRA96 ULUSLARARASI URUN VE SISTEM BELGELENDIRME,
BAGIMSIZ GOZETIM, DENETIM, EGITIM HIZMETLERI LTD. STİ.**

8090/1 Sk. No:5/A Maltepe Mah. Çiğli / İzmir - TÜRKİYE
Tel: +90 232 462 20 51-52 Faks: +90 232 462 20 61
info@integra96.com www.integra96.com

11:05	60,00	52,50	45,00	57,75	54,55	56,25	0,004360
11:10	61,00	53,50	46,00	58,85	55,45	57,25	0,004360
11:15	62,00	54,50	47,00	59,95	56,36	58,25	0,004360
11:20	63,00	55,50	48,00	61,05	57,27	59,25	0,004360
11:25	64,00	56,50	49,00	62,15	58,18	60,25	0,004360
11:30	65,00	57,50	50,00	63,25	59,09	61,25	0,004360
11:35	66,00	58,50	51,00	64,35	60,00	62,25	0,004360
11:40	67,00	59,50	52,00	65,45	60,91	63,25	0,004360
11:45	68,00	60,50	53,00	66,55	61,82	64,25	0,004360
11:50	69,00	61,50	54,00	67,65	62,73	65,25	0,004360
11:55	70,00	62,50	55,00	68,75	63,64	66,25	0,004360
12:00	71,00	63,50	56,00	69,85	64,55	67,25	0,004360
12:05	72,00	64,50	57,00	70,95	65,45	68,25	0,004360
12:10	72,00	65,00	58,00	71,50	65,45	68,50	0,004070
12:15	71,00	65,00	59,00	71,50	64,55	68,00	0,003488
12:20	71,00	65,50	60,00	72,05	64,55	68,25	0,003198
12:25	70,00	65,50	61,00	72,05	63,64	67,75	0,002616
12:30	69,00	65,50	62,00	72,05	62,73	67,25	0,002035
12:35	68,00	65,50	63,00	72,05	61,82	66,75	0,001453
12:40	67,00	65,00	63,00	71,50	60,91	66,00	0,001163
12:45	66,00	64,00	62,00	70,40	60,00	65,00	0,001163
12:50	65,00	63,00	61,00	69,30	59,09	64,00	0,001163
12:55	63,00	61,50	60,00	67,65	57,27	62,25	0,000872
13:00	63,00	61,00	59,00	67,10	57,27	62,00	0,001163
13:05	62,00	60,00	58,00	66,00	56,36	61,00	0,001163
13:10	61,00	59,00	57,00	64,90	55,45	60,00	0,001163
13:15	62,00	60,00	58,00	66,00	56,36	61,00	0,001163
13:20	61,00	58,50	56,00	64,35	55,45	59,75	0,001453
13:25	60,00	57,50	55,00	63,25	54,55	58,75	0,001453
13:30	59,00	55,50	52,00	61,05	53,64	57,25	0,002035
13:35	58,00	54,50	51,00	59,95	52,73	56,25	0,002035
13:40	59,00	54,00	49,00	59,40	53,64	56,50	0,002907
13:45	58,00	52,50	47,00	57,75	52,73	55,25	0,003198
13:50	59,00	53,50	48,00	58,85	53,64	56,25	0,003198
13:55	60,00	54,50	49,00	59,95	54,55	57,25	0,003198
14:00	59,00	54,50	50,00	59,95	53,64	56,75	0,002616
14:05	61,00	56,50	52,00	62,15	55,45	58,75	0,002616
14:10	60,00	53,24	46,49	58,57	54,55	56,62	0,003929
14:15	62,00	53,81	45,62	59,19	56,36	57,91	0,004761
14:20	63,00	53,88	44,76	59,27	57,27	58,44	0,005303
14:25	64,00	53,95	43,89	59,34	58,18	58,97	0,005845
14:30	64,00	53,51	43,03	58,87	58,18	58,76	0,006096



**INTEGRA96 ULUSLARARASI URUN VE SISTEM BELGELENDIRME,
BAGIMSIZ GOZETIM, DENETIM, EGITIM HIZMETLERI LTD. STİ.**

8090/1 Sk. No:5/A Maltepe Mah. Çiğli / İzmir - TÜRKİYE
Tel: +90 232 462 20 51-52 Faks: +90 232 462 20 61
info@integra96.com www.integra96.com

14:35	65,00	53,58	42,16	58,94	59,09	59,29	0,006638
14:40	66,00	53,65	41,30	59,02	60,00	59,83	0,007180
14:45	67,00	53,72	40,44	59,09	60,91	60,36	0,007722
14:50	66,00	52,79	39,57	58,06	60,00	59,39	0,007683
14:55	68,00	53,35	38,71	58,69	61,82	60,68	0,008515
15:00	69,00	53,50	38,00	58,85	62,73	61,25	0,009012
15:05	70,00	54,50	39,00	59,95	63,64	62,25	0,009012
15:10	69,17	54,59	40,00	60,04	62,88	61,88	0,008480
15:15	69,76	55,38	41,00	60,92	63,42	62,57	0,008360
15:20	70,35	56,17	42,00	61,79	63,95	63,26	0,008240
15:25	70,93	56,97	43,00	62,66	64,48	63,95	0,008120
15:30	71,52	57,76	44,00	63,54	65,02	64,64	0,008000
15:35	72,11	58,55	45,00	64,41	65,55	65,33	0,007880
15:40	72,69	59,35	46,00	65,28	66,09	66,02	0,007760
15:45	73,28	60,14	47,00	66,15	66,62	66,71	0,007640
15:50	73,87	60,93	48,00	67,03	67,15	67,40	0,007520
15:55	74,45	61,73	49,00	67,90	67,69	68,09	0,007399
16:00	75,04	62,52	50,00	68,77	68,22	68,78	0,007279
16:05	75,63	63,31	51,00	69,65	68,75	69,47	0,007159
16:10	76,22	64,11	52,00	70,52	69,29	70,16	0,007039
16:15	76,80	64,90	53,00	71,39	69,82	70,85	0,006919
16:20	77,39	65,69	54,00	72,26	70,35	71,54	0,006799
16:25	77,98	66,49	55,00	73,14	70,89	72,23	0,006679
16:30	78,56	67,28	56,00	74,01	71,42	72,92	0,006559
16:35	79,15	68,08	57,00	74,88	71,96	73,61	0,006439
16:40	79,74	68,87	58,00	75,76	72,49	74,30	0,006319
16:45	80,32	69,66	59,00	76,63	73,02	74,99	0,006199
16:50	80,91	70,46	60,00	77,50	73,56	75,68	0,006079
16:55	81,50	71,25	61,00	78,37	74,09	76,37	0,005959
17:00	82,09	72,04	62,00	79,25	74,62	77,06	0,005839
17:05	82,67	72,84	63,00	80,12	75,16	77,75	0,005719
17:10	83,26	73,63	64,00	80,99	75,69	78,44	0,005599
17:15	83,85	74,42	65,00	81,87	76,22	79,14	0,005479
17:20	84,43	75,22	66,00	82,74	76,76	79,83	0,005359
17:25	85,02	76,01	67,00	83,61	77,29	80,52	0,005239
17:30	85,61	76,80	68,00	84,48	77,83	81,21	0,005118
17:35	86,19	77,60	69,00	85,36	78,36	81,90	0,004998
17:40	86,78	78,39	70,00	86,23	78,89	82,59	0,004878
17:45	87,37	79,18	71,00	87,10	79,43	83,28	0,004758
17:50	87,96	79,98	72,00	87,98	79,96	83,97	0,004638
17:55	88,54	80,77	73,00	88,85	80,49	84,66	0,004518
18:00	89,13	81,56	74,00	89,72	81,03	85,35	0,004398



**INTEGRA96 ULUSLARARASI URUN VE SISTEM BELGELENDIRME,
BAGIMSIZ GOZETIM, DENETIM, EGITIM HIZMETLERI LTD. STİ.**

8090/1 Sk. No:5/A Maltepe Mah. Çiğli / İzmir - TÜRKİYE
Tel: +90 232 462 20 51-52 Faks: +90 232 462 20 61
info@integra96.com www.integra96.com

$\text{COP Coefficient of Performance} = \frac{4,80 \text{ [Heat Energy Produced (kWh)]}}{2,65 \text{ [Electricity Consumption (kWh)]}} = 1,811320$	

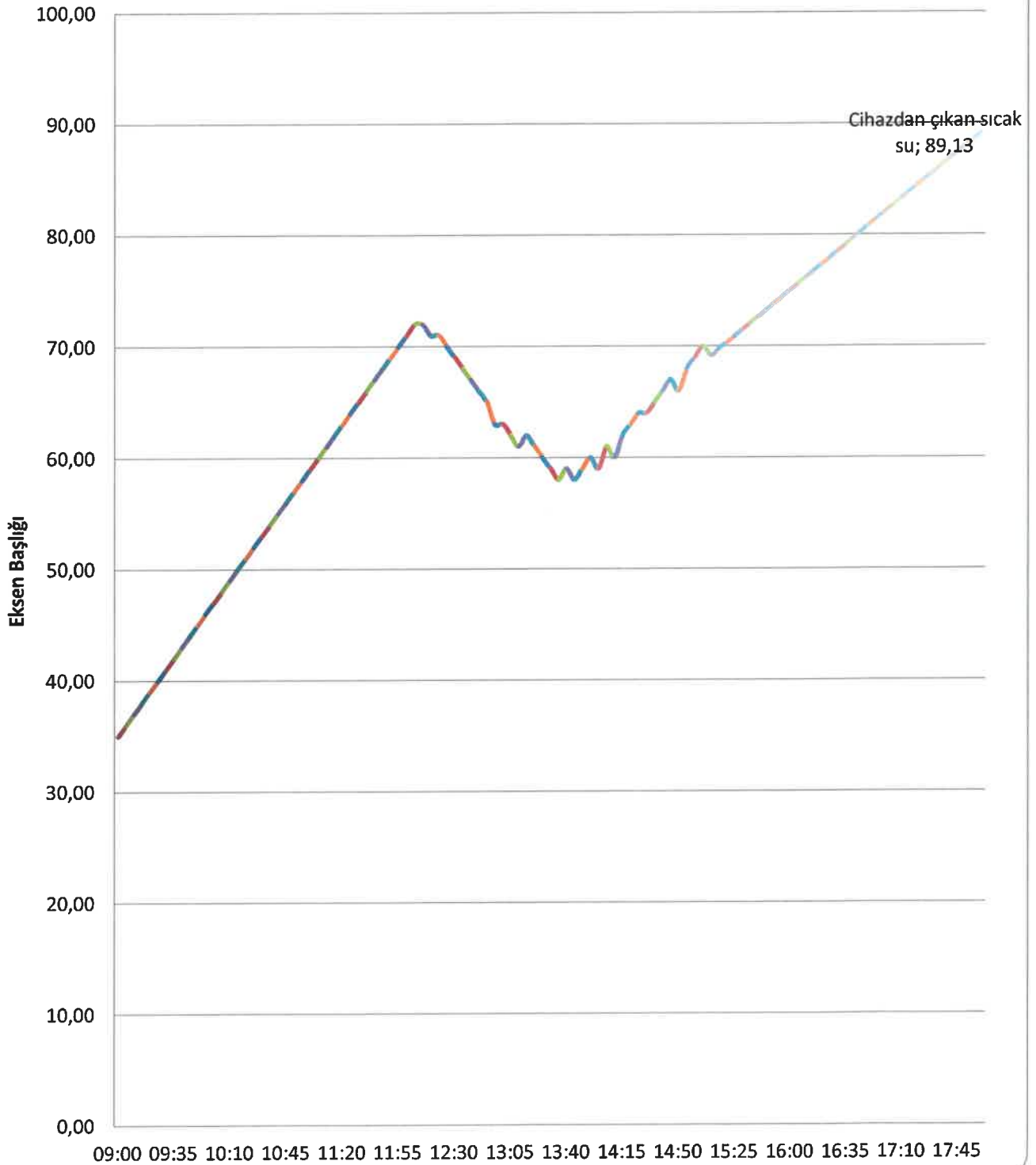
Test result	Heating unit	Outdoor unit
Sound power level dB(A)	46.2	--



**INTEGRA96 ULUSLARARASI URUN VE SISTEM BELGELENDIRME,
BAGIMSIZ GOZETIM, DENETIM, EGITIM HIZMETLERI LTD. STİ.**

8090/1 Sk. No:5/A Maltepe Mah. Çiğli / İzmir - TÜRKİYE
Tel: +90 232 462 20 51-52 Faks: +90 232 462 20 61
info@integra96.com www.integra96.com

Cihazdan çıkan sıcak su

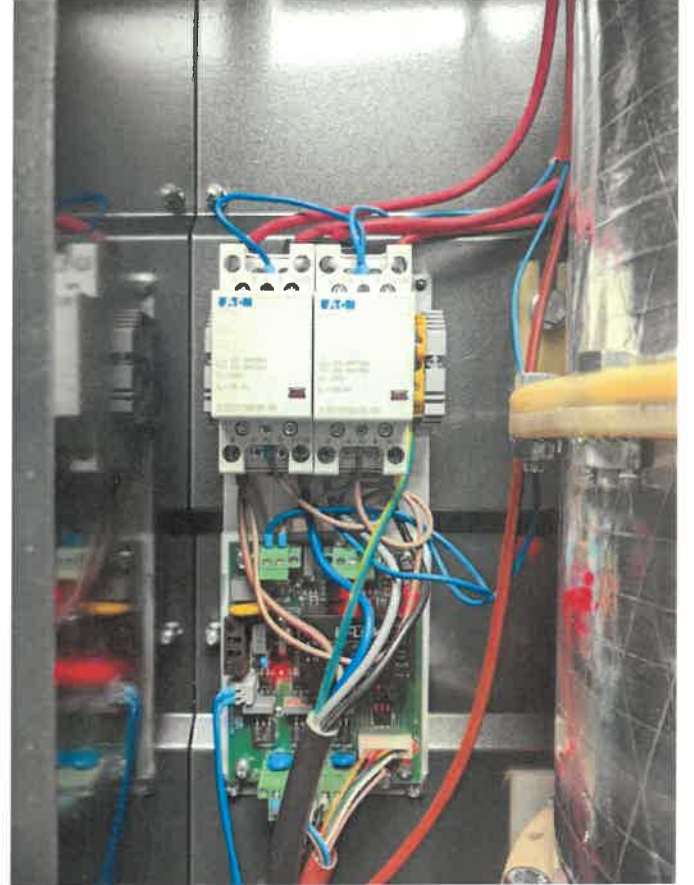
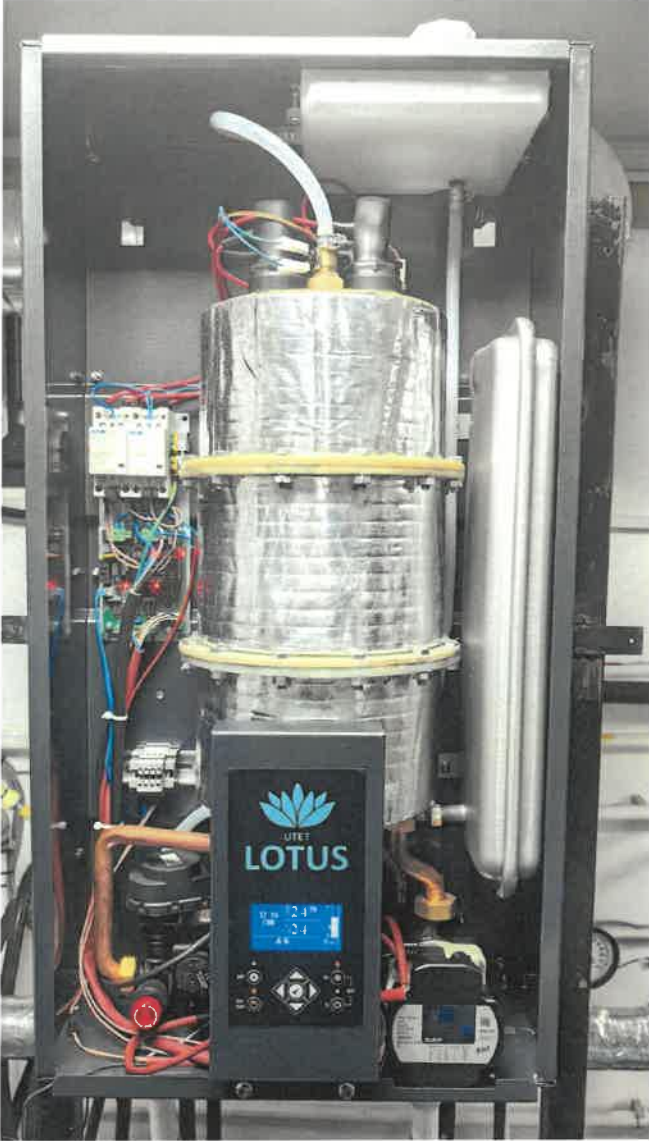




**INTEGRA96 ULUSLARARASI URUN VE SISTEM BELGELENDIRME,
BAGIMSIZ GOZETIM, DENETIM, EGITIM HIZMETLERI LTD. STİ.**

8090/1 Sk. No:5/A Maltepe Mah. Çiğli / İzmir - TÜRKİYE
Tel: +90 232 462 20 51-52 Faks: +90 232 462 20 61
info@integra96.com www.integra96.com

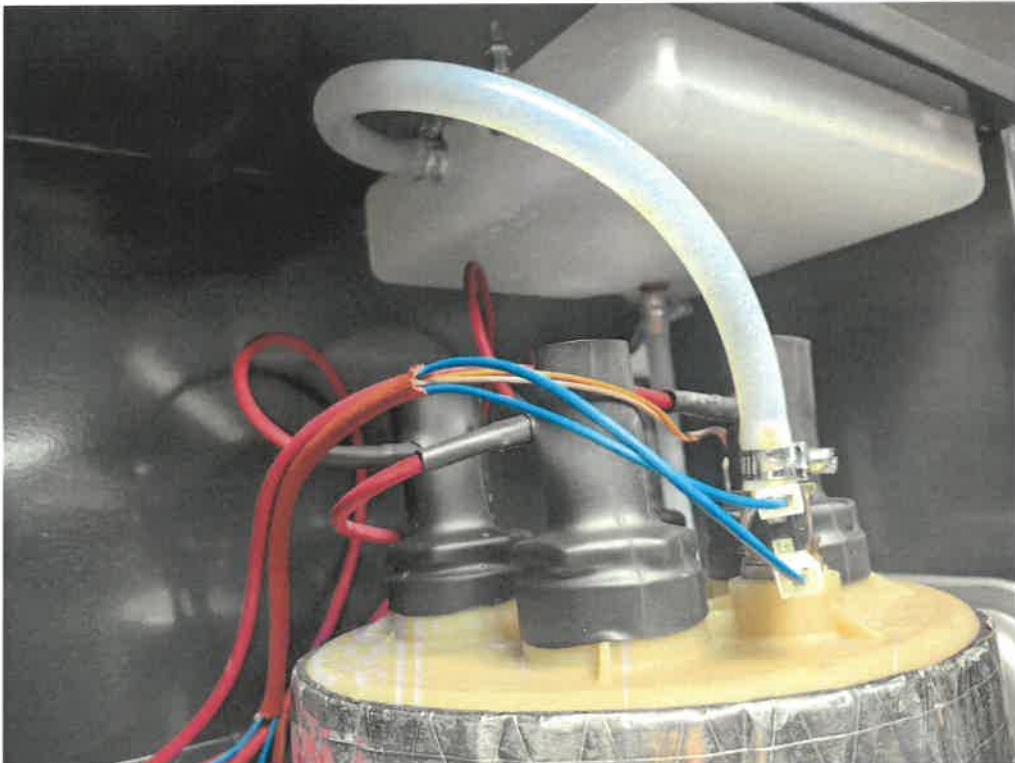
ATTACHMENT 1
Photo Documentation





**INTEGRA96 ULUSLARARASI URUN VE SISTEM BELGELENDIRME,
BAGIMSIZ GOZETIM, DENETIM, EGITIM HIZMETLERI LTD. STİ.**

8090/1 Sk. No:5/A Maltepe Mah. Çiğli / İzmir - TÜRKİYE
Tel: +90 232 462 20 51-52 Faks: +90 232 462 20 61
info@integra96.com www.integra96.com





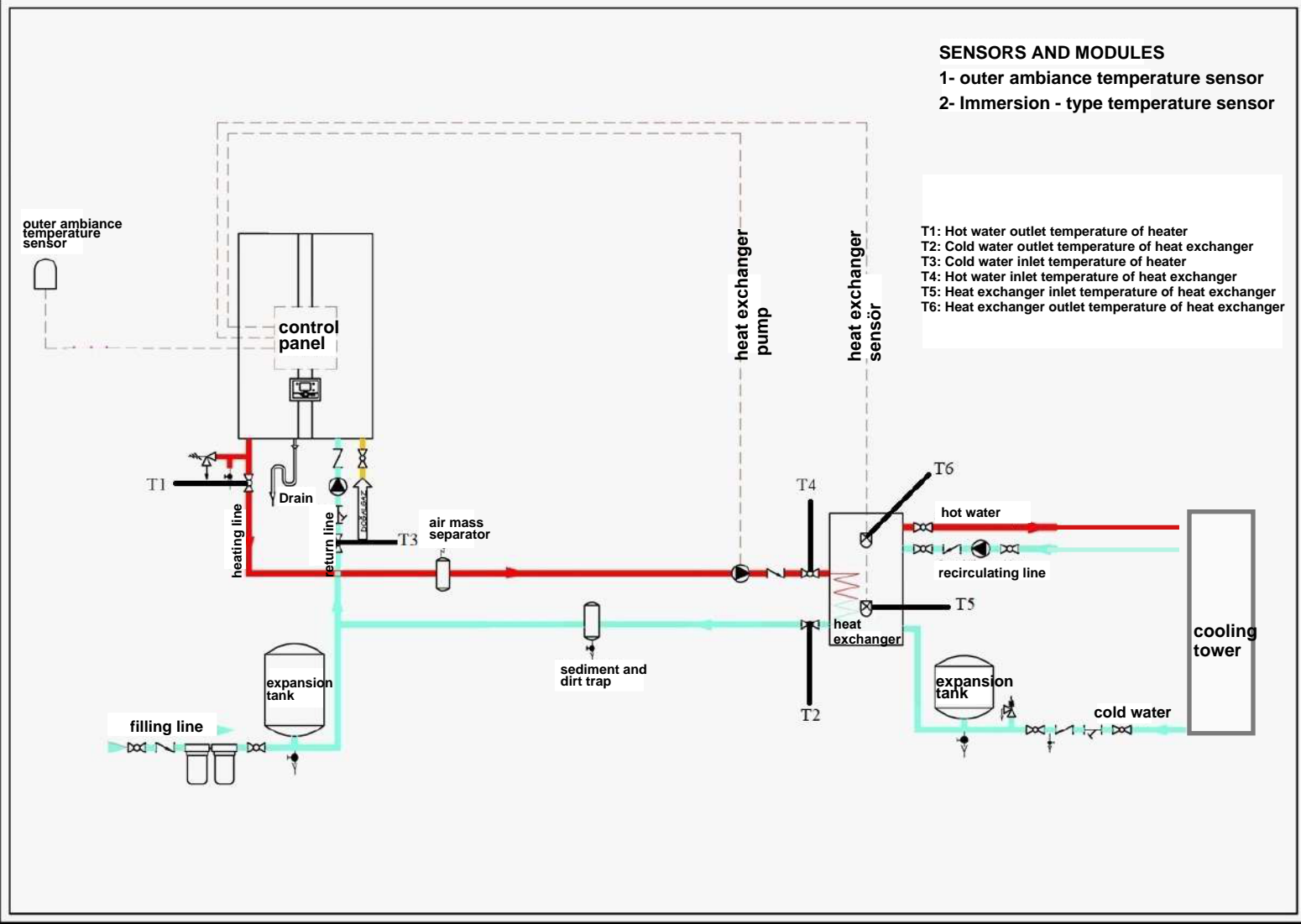
**INTEGRA96 ULUSLARARASI URUN VE SITEM BELGELENDIRME,
BAGIMSIZ GOZETIM, DENETIM, EGITIM HIZMETLERI LTD. STİ.**

8090/1 Sk. No:5/A Maltepe Mah. Çiğli / İzmir - TÜRKİYE
Tel: +90 232 462 20 51-52 Faks: +90 232 462 20 61
info@integra96.com www.integra96.com

SENSORS AND MODULES

- 1- outer ambience temperature sensor
- 2- Immersion - type temperature sensor

- T1: Hot water outlet temperature of heater
T2: Cold water outlet temperature of heat exchanger
T3: Cold water inlet temperature of heater
T4: Hot water inlet temperature of heat exchanger
T5: Heat exchanger inlet temperature of heat exchanger
T6: Heat exchanger outlet temperature of heat exchanger



NOTE: The hydrogen plasma combi is connected to one side of the plate heat exchanger, which has a heating and cooling capacity of 500 litres per hour. The other side of the plate heat exchanger is connected to the cooling tower, and measurements were taken based on the cooling load when the system entered stabilized operation.